



## Wilmington Dispensary

Wilmington, NC 28401

info@ilmdispensary.com

(910) 252-9561

## Sample 735-072825-010

6000mg CBD Tincture (2oz)

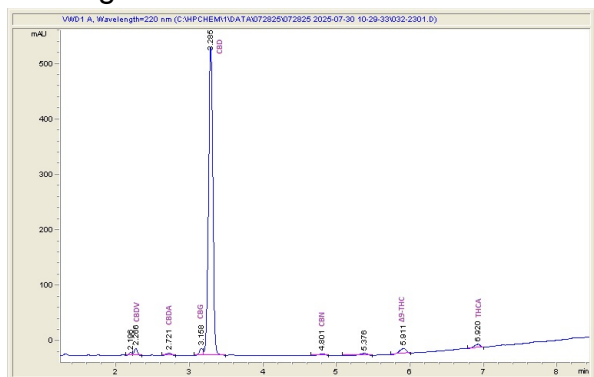
Sample Submitted: 07-28-2025; Report Date: 08-04-2025

Sample Unit Size: 56.40 g

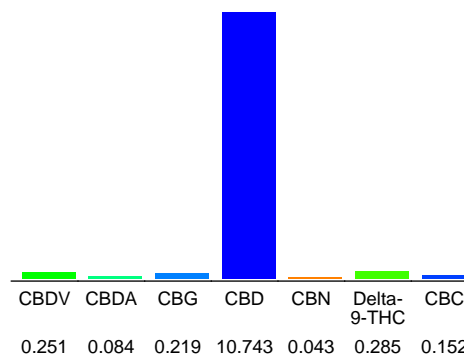
## 6000mg CBD Tincture (2oz)

Tincture

### Chromatogram



### Cannabinoid Profile



### Cannabinoid Profile by HPLC

**0.29%**

Delta-9-THC

**10.74%**

CBD

**11.78%**

Total Cannabinoids

Cannabinoid	% wt	mg/unit
CBDV	0.251	141.56
CBDA	0.084	47.38
CBG	0.219	123.52
CBD	10.74	6059.05
CBN	0.043	24.25
Delta-9-THC	0.285	160.74
CBC	0.152	85.73
<b>Total Cannabinoids</b>	<b>11.78</b>	<b>6642.2</b>
<b>Calculated Total THC</b>	<b>0.29</b>	<b>160.74</b>
<b>Calculated CBD Yield</b>	<b>10.82</b>	<b>6100.60</b>
Calculated Total THC = Delta-9-THC + 0.877 * THCA		
Calculated Maximum CBD Yield = CBD + 0.877 * CBDA		

**Marin Analytics, LLC**  
250 Bel Marin Keys Blvd, Suite D4  
Novato, CA 94949

833-321-TEST / info@marinanalytics.com

**Mike Clemmons**  
Lab Manager

This sample has been tested by Marin Analytics, LLC using valid testing methodologies and a quality system. Values reported relate only to the sample tested. Marin Analytics, LLC makes no claims as to the efficacy, safety, or other risks associated with any detected or non-detected levels of any compounds reported herein. This Certificate shall not be reproduced except in full without the written approval of Marin Analytics, LLC. Copyright 2023 Marin Analytics, LLC All Rights Reserved.